

# EZM012NB Zero Bias Schottky Detector

SMA-M/BNC-F Negative Output Polarity

0.01 to 12.4 GHz



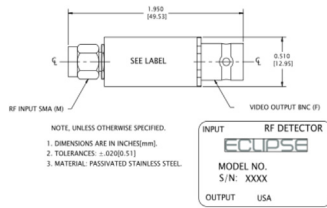
## Technical Characteristics

### Product Features

No bias required
Neg. (-) Polarity
Broadband Flat Frequency Response
Excellent VSWR

### Max. Ratings

Storage Temperature:	-65° to +100°C
Operating Temperature:	-54° to +100°C
Maximum input power:	100mW CW



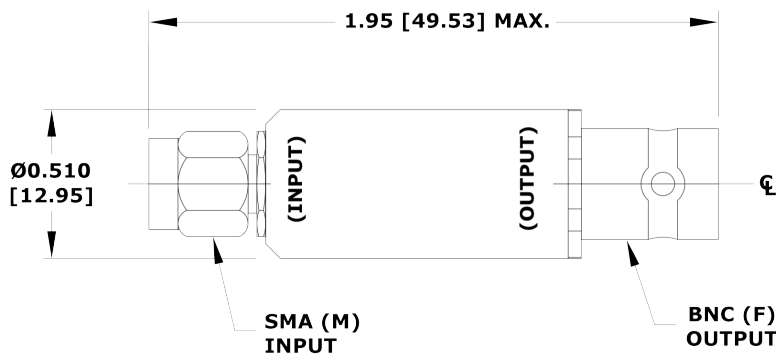
NOTES:  
 Specifications @ +25°C & -20dBm input power

## Electrical Specifications

Parameters	Freq. (GHz)	Min.	Typical	Max.	Units
Voltage Sensitivity	0.01 to 12.4	300	500	600	mV/mW open circuit
Voltage Sensitivity Stability over Temperature	0.01 to 12.4	2.5	3.0	3.5	dB
VSWR	0.01 to 12.4		1.40:1	1.60:1	
Flatness	0.01 to 12.4		+/-0.30	+/-0.40	dB
Polarity			Neg.(-)		
Video Capacitance		420	470	500	pF
Risetime & Falltime @ +10 dBm					
Dynamic Range	0.01 to 12.4	-30		+20	dBm
CW Power Handling				250	mW
Tss					
Operating Temperature		-54		+100	°C

NOTES:  
 1. Standard polarity is negative. For positive polarity, add a 'P', ex. EZM012PNB  
 2. Typical values are measured at +25°C and are not guaranteed

## Outline Drawing



# EZM0112NB Zero Bias Schottky Detector

SMA-M/BNC-F Negative Output Polarity

0.01 to 12.4 GHz



## EZM Transfer Curve

